



EUROPEAN WATER RESOURCES ASSOCIATION

11th WORLD CONGRESS
on Water Resources and Environment
[EWRA 2019]

**Managing Water Resources
for a Sustainable Future**

Madrid, 25-29 June 2019

PROCEEDINGS

Editors

Luis Garrote
George Tsakiris
Vassilios A. Tsihrintzis
Harris Vangelis
Dimitris Tigkas



2019

© 2019. European Water Resources Association (EWRA)
ISBN: 978-618-84419-0-3

Managing Water Resources for a Sustainable Future

Proceedings of the 11th World Congress of EWRA on Water Resources and Environment

[EWRA 2019]

25-29 June 2019, Madrid, Spain

Editors:

Luis Garrote, George Tsakiris, Vassilios A. Tsihrintzis, Harris Vangelis, Dimitris Tigkas

Disclaimer:

Although this book of proceedings has been compiled with utmost care, the Editors cannot be held responsible for any misprints and/or omissions. The options expressed by the authors are not necessarily endorsed by the Association.

EWRA Editorial Office:

Iroon Polytechniou 9, 157 80, Athens, Greece

e-mail: puboffice@ewra.net

Cite this publication as:

Garrote L., Tsakiris G., Tsihrintzis V.A., Vangelis H., Tigkas D., (eds.) 2019. Managing Water Resources for a Sustainable Future. Proceedings of the 11th World Congress of EWRA on Water Resources and Environment, 25-29 June 2019, Madrid, Spain.

A proposed framework for flood risk assessment in cultural heritage sites upon specific ultra-detailed stage-damage functions

J. Garrote^{1*}, A. Díez-Herrero², C. Escudero³, I. García³

¹ Department of Geodynamics, Stratigraphy and Paleontology, Complutense University of Madrid, Spain

² Geological Hazards Division, Geological Survey of Spain (IGME), Madrid, Spain

³ Risk and Emergencies Management in Cultural Heritage, Castilla & Leon Regional Government, Valladolid, Spain

* e-mail: juliog@ucm.es

Introduction

River floods are possibly the natural phenomenon that has the greatest impact on the actual deterioration of cultural heritage. That is why the study of flood risk becomes essential in any attempt to manage cultural heritage (archaeological sites, historic buildings, art-works, etc.). In this context, this paper proposes a methodological framework for flood risk analysis in cultural heritage locations (BICs) in central Spain. The analysis is implemented in two phases: a first phase of estimating the level of qualitative risk at a regional scale; and a second phase of calculating the damages on patrimonial assets in a quantitative way, at a local scale. The first phase is based on a flood risk matrix for patrimonial assets, fed by spatial information from a GIS. The developed risk matrix outweighs previous proposals of this type (Ortiz et al. 2016; Arrighi et al. 2018), making it more versatile and useful.

For the second phase of analysis, several BICs (of different typology) with high susceptibility to flooding have been selected, for which ultra-detailed magnitude-damage functions have been developed. These functions have to adjust to the unique characteristics of the assets they represent, although they may be similar to functions developed for other types of buildings (i.e. Pistrika et al. 2014; Blanco-Vogt and Schanze 2014; Godfrey et al. 2015), and also present unique characteristics. Finally, the proposed methodological framework allows us to quantify the damages (tangible, both direct and indirect) associated with each scenario (return periods) considered, which cover ordinary and extraordinary events.

Materials and methods

Flood Risk – Cultural Heritage Matrix development: The development of a risk matrix for heritage buildings is an analytical methodology that has been used previously in the last decade (Ortiz et al. 2016; Arrighi et al. 2018). However, the complexity of the matrix developed in this work significantly exceeds that of previous matrices and it is based on 7 variables (three linked to the hazard factor and four linked to the vulnerability factor), from which six levels of potential risk are defined (qualitatively). The process of estimating the level of risk can be considered as an iterative process dependent on the T-year return period flood (Figure 1), and the spatial relationship between BICs and flood prone areas.

Development of ultra-detailed Stage-Damage Functions: For the development of magnitude-damage functions, the city of Zamora has been taken as a study area, and a detailed catalogue of cultural heritage was prepared. Economic losses have been considered both in the content (buildings) and in the content (movable heritage, such as sculptural, pictorial or documentary assets). These patrimonial assets have been classified into different categories (Figure 2), depending mainly on the type of material used for their construction; considering their vulnerability and the effective potential damage depending on water depth, flow velocity and the time of permanence of the flood (flash floods vs. deluge floods).

Results and concluding remarks

A total of 11 BICs are affected by the 500-year return period flood, including the old town of Zamora, 8 churches, 1 convent and 1 museum. The numerical and cartographic results of this work are influenced by many of the limitations already pointed out by Pistrika et al. (2014) with respect to the deficiency in the quality of the information available regarding flood damage to buildings. This limits the quality of the

results obtained and increases their associated uncertainties.

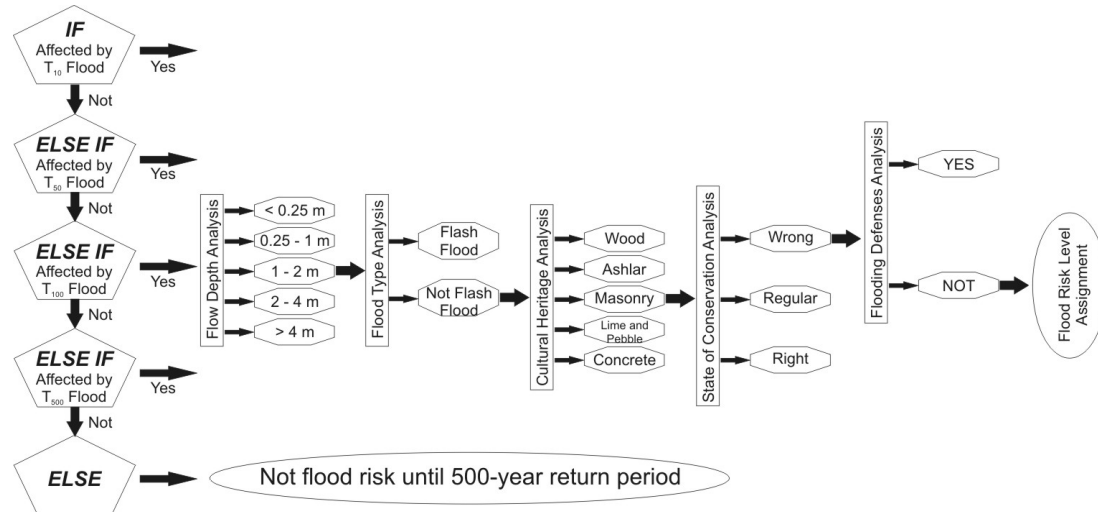


Figure 1. Flow chart for Flood Risk assessment in Cultural Heritage.

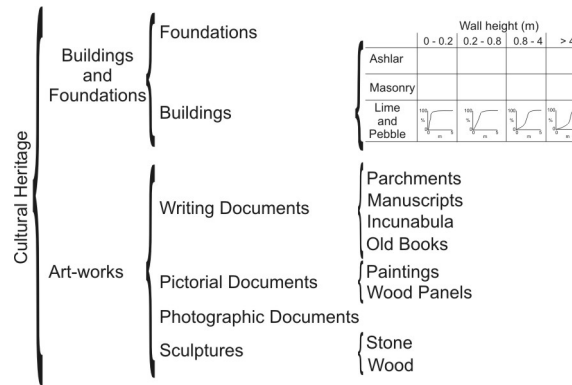


Figure 2. Diagram of the Cultural Heritage typologies.

In addition, in the case of sculptural and pictorial assets, evaluation of their exposure to floods is complicated (due to the possibility of being moved to safe areas). Despite these circumstances, the development of specific magnitude-damage functions for each heritage element has proved essential for a correct estimation of flood risk in cultural heritage, and as an aid to preventive conservation and rescue in emergencies.

Acknowledgments: This study was supported by the project DRAINAGE, CGL2017-83546-C3-R (MCIU/AEI/FEDER, UE).

References

- Arrighi C, Brugioni M, Castelli F, Franceschini S, Mazzanti B (2018) Flood risk assessment in art cities: the exemplary case of Florence (Italy). *Journal of Flood Risk Management* 11: S616–S631. <http://dx.doi.org/10.1111/jfr3.12226>
- Blanco-Vogt A, Schanze J (2014) Assessment of the physical flood susceptibility of buildings on a large scale – conceptual and methodological frameworks. *Natural Hazards and Earth System Sciences* 14(8):2105–2117. <http://dx.doi.org/10.5194/nhess-14-2105-2014>
- Godfrey A, Ciurean RL, van Westen CJ, Kingma NC, Glade T (2015) Assessing vulnerability of buildings to hydro-meteorological hazards using an expert based approach – An application in Nehoiu Valley, Romania. *International Journal of Disaster Risk Reduction* 13:229–241. <http://dx.doi.org/10.1016/j.ijdrr.2015.06.001>
- Ortiz R, Ortiz P, Martín JM, Vázquez MA (2016) A new approach to the assessment of flooding and dampness hazards in cultural heritage, applied to the historic centre of Seville (Spain). *Science of the Total Environment* 551–552:546–555. <http://dx.doi.org/10.1016/j.scitotenv.2016.01.207>
- Pistrika A, Tsakiris G, Nalbantis I (2014) Flood Depth-Damage Functions for Built Environment. *Environmental Processes* 1(4):553–572. <http://dx.doi.org/10.1007/s40710-014-0038-2>